

ART from the PAST

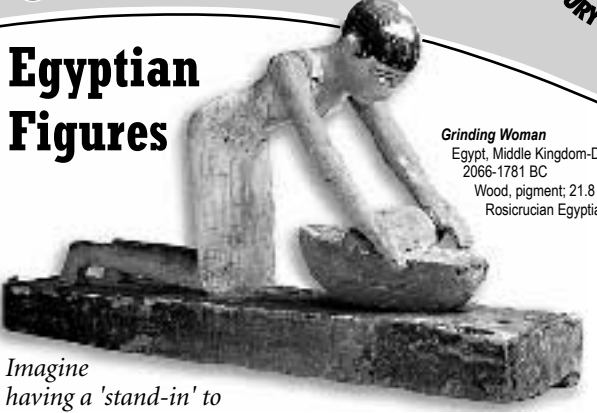
PROJECTS

FOR SOCIAL STUDIES

Home & Hearth

What makes a dwelling a home? People of the past looked for beauty in their daily lives: a graceful bowl, a finely handcrafted tool or a warm colored blanket. With artistic care, they transformed their everyday world to bring comfort & cheer to their homes.

Egyptian Figures

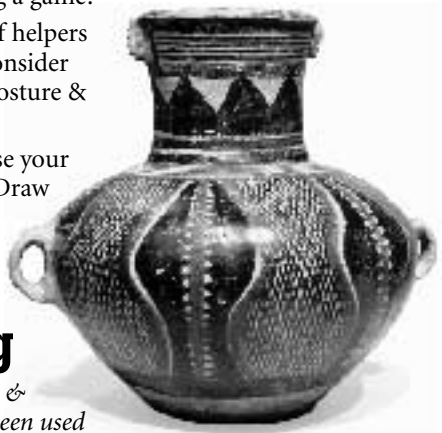


Grinding Woman
Egypt, Middle Kingdom-Dynasty 11-12, 2066-1781 BC
Wood, pigment; 21.8 cm
Rosicrucian Egyptian Museum, RC 0482

Imagine having a 'stand-in' to do your daily work for you. Ancient Egyptians included figures of servants in their tombs to help in the afterlife. Statues of bakers, barbers & butchers stood ready to keep the master happy & comfortable.

- ◆ What would you like help with? Your homework? The dishes? Winning a game?
- ◆ Draw a group of helpers to assist you. Consider tools, clothes, posture & environment.
- ◆ How will you use your new free time? Draw that, too!

Chinese Water Jug



Ceramic water jugs & cooking pots have been used for a long time. This Chinese jar is over 4,500 years old! Clay was dug from the ground, rolled into coils & formed into a container. This jug was smoothed, burnished, painted & fired at a high temperature. Try making your own coil pot.

- ◆ Roll balls of clay back & forth into long coils.
- ◆ Wind the coils into a spiral base. Then wind coils up into a bowl shape. As one coil ends, add another.
- ◆ Gently smooth coils together. Paint designs with a second color.



California, Sonoma County, Pomo people; **Feather basket**, late 19th century; Beads and feathers 3 3/4 x 6 in. (9.5 x 15.2 cm); Fine Arts Museums of San Francisco, Museum purchase, 21478

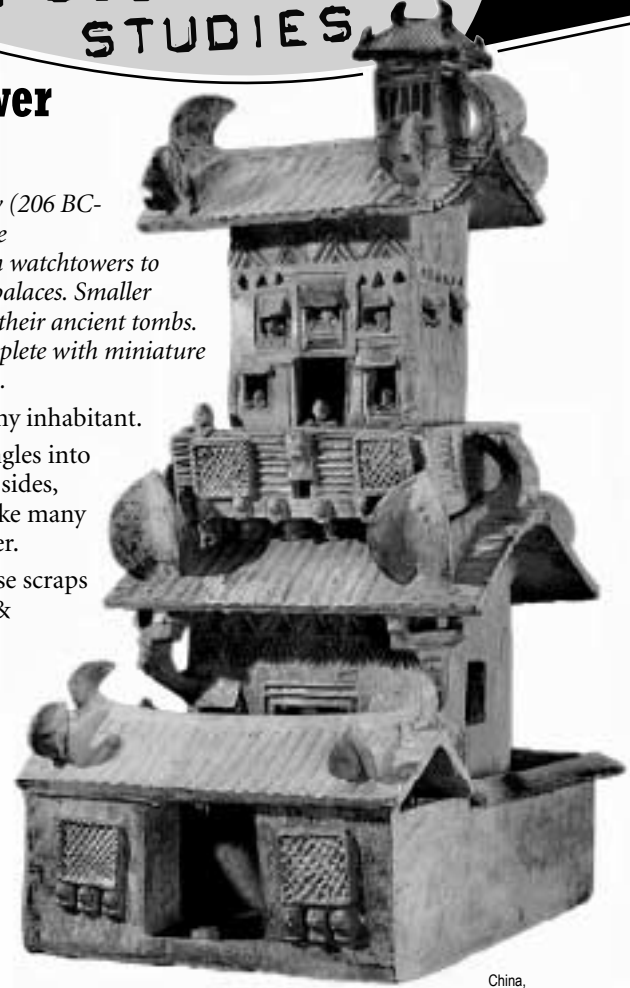
Information & activities created for teachers, parents & kids by:
COMMUNITY SCHOOL OF MUSIC AND ARTS (CSMA) AT FINN CENTER
230 San Antonio Circle, Mountain View, CA 94040
650.917.6800 | www.arts4all.org

Written by Mary Bender; Designed by Ina Johnson ©2007
MANY THANKS TO: Cantor Arts Center at Stanford; Fine Arts Museums of San Francisco; Rosicrucian Egyptian Museum, San Jose

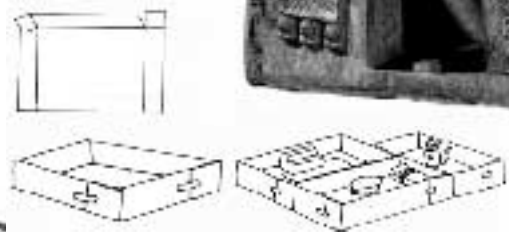
Chinese Tower House

During the Han Dynasty (206 BC-220 AD) wealthy Chinese landowners built wooden watchtowers to guard their pavilions & palaces. Smaller ceramic models guarded their ancient tombs. Architectural details complete with miniature people tell of life long ago.

- ◆ Make a home for a tiny inhabitant.
- ◆ Fold cardstock rectangles into rooms. Measure 1 1/2" sides, fold, snip & tape. Make many rooms & tape together.
- ◆ Furnish the house. Use scraps of fabric, cardboard & styrofoam for chairs, tables, rugs, dishes & beds.
- ◆ Pinch a mouse, cat or person from self-drying clay to live in the house.



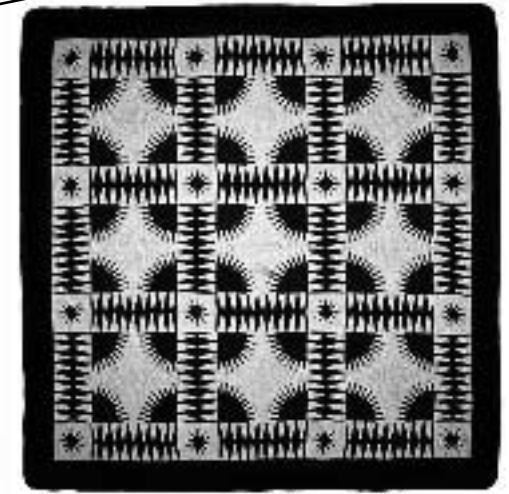
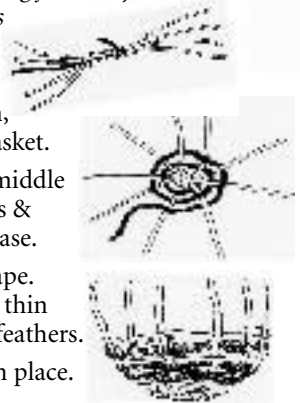
China, Eastern Han dynasty, AD 25-221
Three-Story Pavilion
Earthenware with lead silicate glaze
Cantor Arts Center at Stanford; 1998.76
www.museum.stanford.edu



Pomo Feather Basket

Northern California Indians wove baskets for cooking food, carrying babies, preserving seeds & catching fish. They twined & coiled native grasses into varied shapes & outlined intricate patterns with feathers, plumes, beads & shells.

- ◆ Gather materials (pipe cleaners, yarn, paper, feathers & beads) to plait a basket.
- ◆ Wrap one pipe cleaner end around middle of 5 others. Open 9 ends like sunrays & weave yarn over & under them for base.
- ◆ Gently bend ends to form basket shape. Continue weaving. Experiment. Use thin paper strips, string, felt. Add beads, feathers.
- ◆ Fold ends inward to hold last layer in place.



Early American Quilt

American settlers recycled fabric scraps into warm coverlets. They cut, pieced & sewed patchwork squares using designs from their imagination or memory. When joined, the squares created a cozy quilt.

- ◆ Study quilt designs like Anvil, Pinwheel, Log Cabin, etc.
- ◆ Fold & cut a 4" paper into smaller squares & triangles.
- ◆ Combine pieces on a new 4" paper. Make more squares to fill an 8" paper. Create a new or traditional design.



Plowing Man with Oxen
Egypt, Dynasty 12, c.1991-1783 BC
Wood, pigment; 19x29x22 cm
Rosicrucian Egyptian Museum, RC 1810

Look in the Mercury News

Search for news about daily life here & in other countries. How does it compare to daily life long ago? What's the same? What's different? What makes a house a home? Search the newspaper for ways people make their homes cozy & comfortable.

ARTS FOR ALL!

Elizabeth Welch (American, active mid 19th century)
Quilt top "New York Beauty", 1855
Cotton with appliqué borders, 231.1 x 165.4 cm (91 x 73 in.)
Fine Arts Museums of San Francisco, Gift of Mrs. Maybel Day, 54-6-10